

A

B

C

D

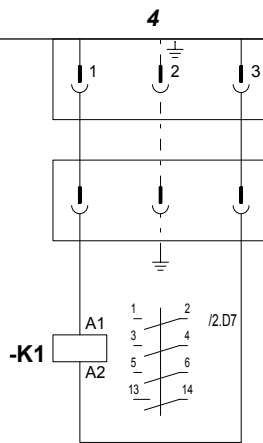
E

F

Brenner
Brûleur
Bruciatore
Brander
Burner

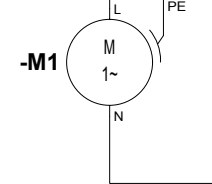
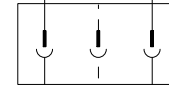
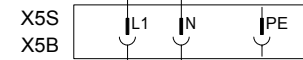
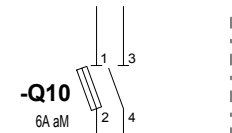
TCG 2XX

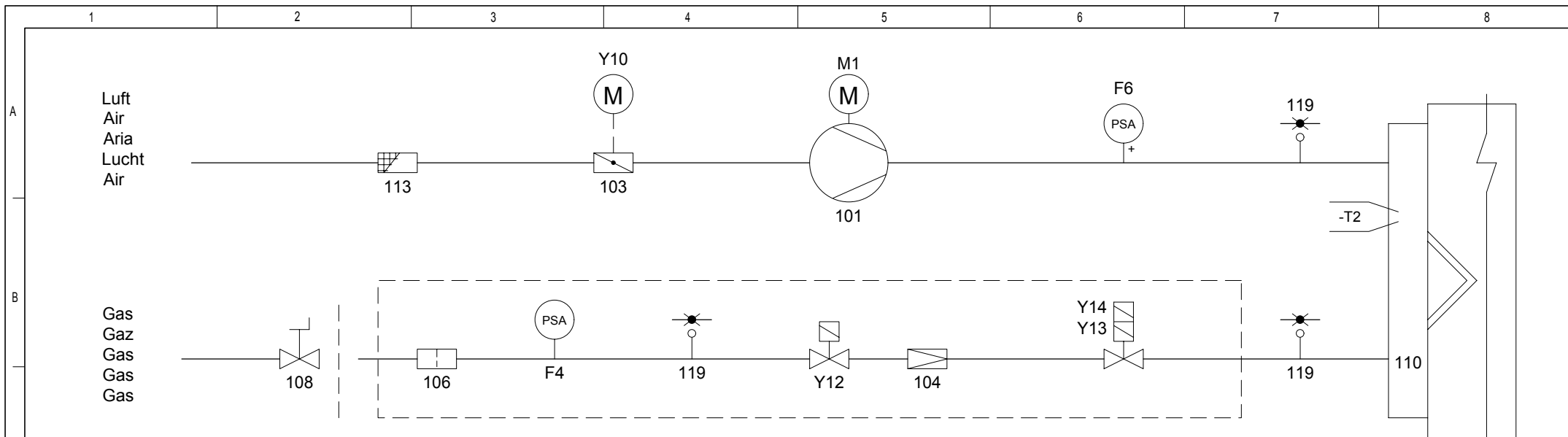
A1



230V~ 50Hz

L10 N





A1	Feuerungsautomat	Coffret de contrôle	Programmatore di comando	Bedienings en veiligheidskoffer	Control and safety unit
A4	Display	Afficheur	Visualizzatore	Uitlezing	Display
B1	Ionisationssonde	Sonde de ionisation	Sonda d'ionizzazione	Ionisatie-sensor	Ionisation sensor
B10	Messbrücke	Pont de mesure	Ponte di misura	Meetbrug	Current bridge
F4	Gasdruckwächter min.	Manostat gaz mini	Pressostato gas min.	Gaspressostaat min.	Min. gas pressure switch
F6	Luftdruckwächter	Manostat d'air	Pressostato aria	Luchtpressostaat	Air pressure switch
K1	Kontaktschalter des Ventilators	Contacteur du ventilateur	Contattore del ventilatore	Contactoor van ventilator	Fan unit contactor
M1	Brennervormotor	Moteur du brûleur	Motore del bruciatore	Brandermotor	Burner motor
T2	Zündtrafo	Transformateur d'allumage	Trasformatore d'accensione	Ontstekingstransformator	Ignition transformer
Y10	Stellantrieb	Servomoteur	Servomotore	Servomotor	Servomotor
Y12	Gasventilgasseitig	Vanne gaz de sécurité	Valvola sicurezza gas	Veiligheidsventiel gas	Safety gas valve
Y13	Gasventil Brennerseitig	Vanne gaz principale	Valvola principale gas	Hoofdafsluiter gas	Gas valve burner side
Y14	Gasventil Stufe 2	Vanne gaz 2ème allure	Valvola gas stadio 2	Gasventiel trap 2	Gas valve 2d stage
101	Ventilator	Ventilateur	Ventilatore	Ventilator	Blower
103	Luftklappe	Volet d'air	Serranda aria	Luchtklep	Air flap
104	Druckregler	Régulateur de pression	Regolatore della pressione	Drukregelaar	Pressure regulator
106	Filter	Filtre	Filtro	Filter	Filter
108	Handventil	Vanne manuelle	Valvola manuale	Handventiel	Manual valve
110	Gasinjektor	Injecteur gaz	Ugello gas	Gasinjector	Gas injector
113	Ansauggitter	Grille d'aspiration	Scatola dell'aria	Luchthuis	Air box protection
119	Messnippel	Prise pression	Preso pressione	Meetnippel	Pressure take-off